



Chairman / Mayors Report – June 2026

Town Council Meeting – 8 June 2026 at 7.30 pm - Public Question Time: The time allocated is at the discretion of the Council/Chairman. Residents are invited to give their views and question the Town Council on issues on this agenda or raise issues for future consideration at the discretion of the Chairman. Members of the public may not take part in the Town Council meeting itself. A Councillor with a prejudicial interest in a particular issue may address the Council on the issue during Public Question Time subject to the Councillor leaving the room in the event of an exchange of the issue between the public and the Council during this period. 3 minutes per person if public wish to speak, or at the Chair's discretion.

Mayoral Update

- As Mayor of Woburn Sands, I shall be representing the town at the annual Armed Forces Flag Raising on Monday 22 June 2026 at the Civic Offices in Central Milton Keynes
- On 5th May we met with Sheree of Cute Maps to discuss a potential Arts related Wayfinder, high street enhancement mapping project.
- On 18th May we met with representative of parklands residents to discuss EWR and footpath related issues

WPC Chairmans Related Issues



- **Library Boxes**

The contractor will install as soon as the weather permits.

- **Visit to the MKCC Highways Parishes Drop in Session**

The Chair and the clerk attended the MKCC Highways hosted session for town and parish councils hosted at the Campbell Park Community Council Hub Springfield, on Thursday 21st May. The clerk will provide a full update on the assurances and comments received from the City Council Highways representatives.

- **Town Council response to EWR Consultation**

A draft response to be submitted by WSTC to EWR will be formally agreed at the meeting on Monday 8th June.

- **Anglian Water**

There have been issues in our neighbouring communities regarding water supply, pressure and a burst water main. Contact has been made with Anglian Water representative Grant Tuffs, Senior

Policy and Public Affairs Lead (Corporate Affairs) who has offered to attend a meeting with WSTC and/or a joint meeting with representatives of all four Danesborough parish councils.

Grants details areMobile: 07841 958580

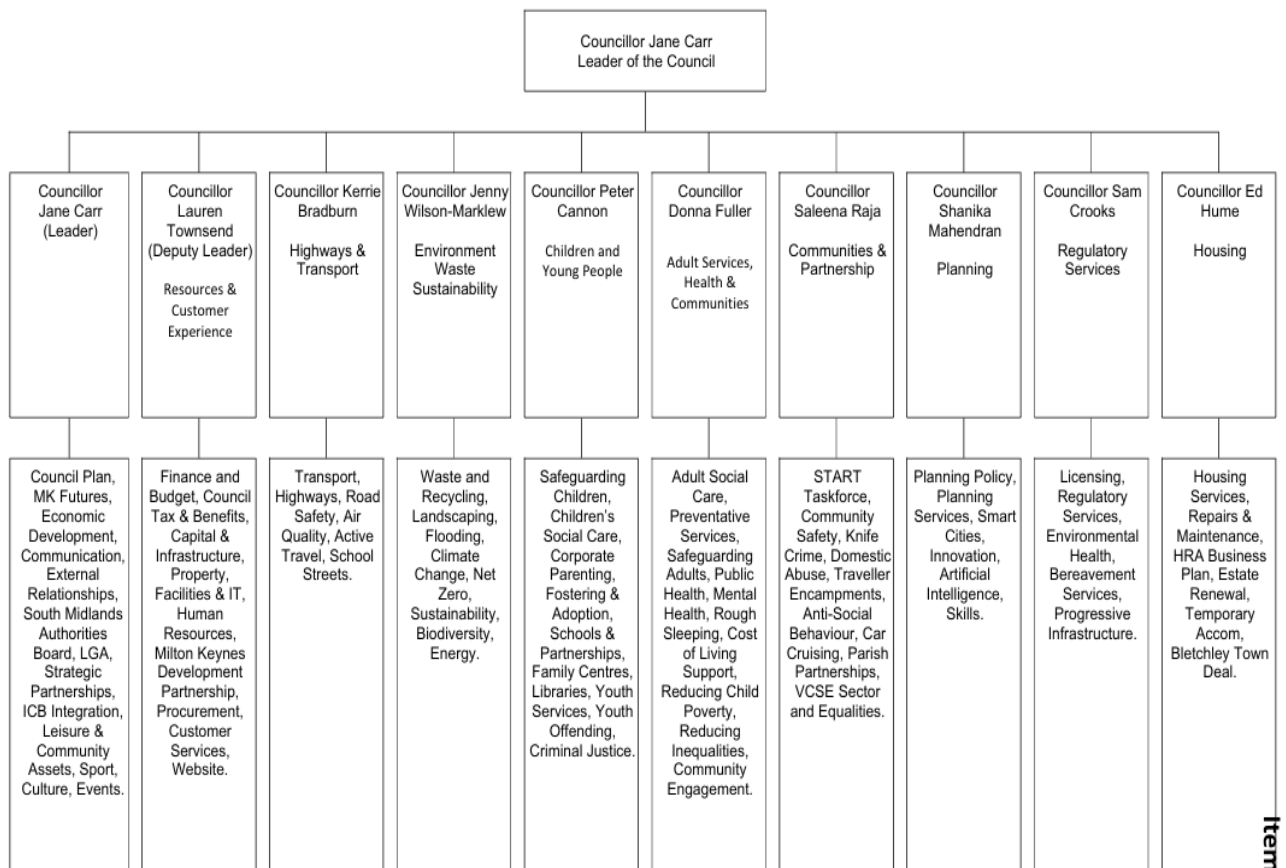
Contact address: Anglian Water Services Limited

Lancaster House, Lancaster Way, Ermine Business Park, Huntingdon, Cambridgeshire, PE29 6XU

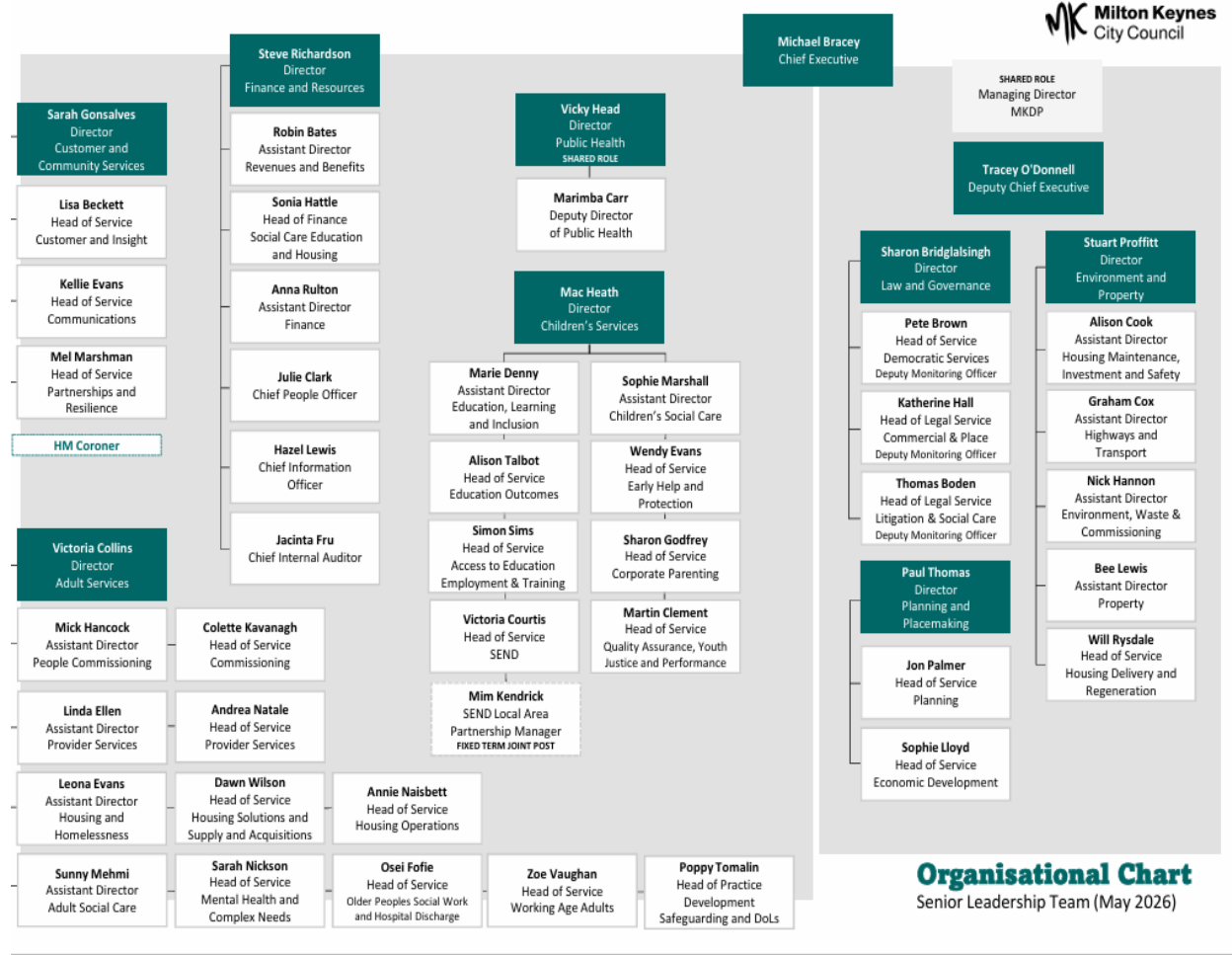
Flood and Water Management at MKCC Summer Update

The Flood and Water Management Team at MKCC are pleased to share a summer update which includes information, advice and guidance relating to flood and water management, including an up-to-date report on current enforcement cases. For more information, please contact LLFA@milton-keynes.gov.uk .

Following the recent local elections the new Cabinet Structure at MKCC is set out below.



The latest Senior Management structure at MK City Council is set out below



Universal Studios - gidon.freeman@nbcuni.com

Gidon Freeman is the Vice President of External Affairs for Universal Destinations & Experiences, focusing on the proposed UK theme park and entertainment resort project as of January 2026. He previously held a long-term role as Vice President of Government and Regulatory Affairs at NBCUniversal International.



Join the Youth Council

Woburn Sands (Proposed) Youth Club / Possible Youth Town Council

Planning – an update will be provided at the town council meeting.

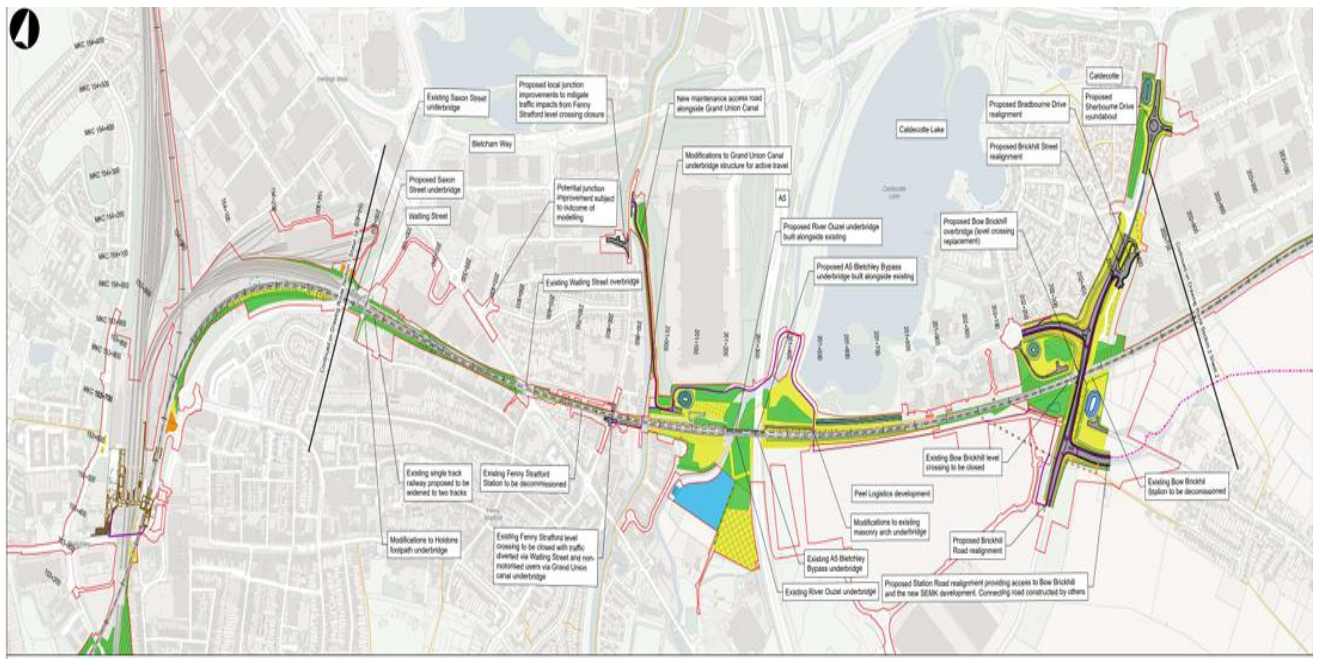
The Bow Brickhill bypass (Relief Road).

The Relief Road will be the primary street that will run through the southside of SEMK and provide the access to the all-through school site. MKCC envisage a planning application for this piece of infrastructure potentially being submitted by the end of this year, first quarter of next year, with construction commencing toward the end of 2027.

There are a number of caveats to this though, firstly around EWR and the outcome of the current consultation and the ongoing technical work. There is a preferred plan for the delivery of the new bridge crossing at Bow Brickhill but it's confirmation as you know will come through the DCO and the certainty of the DCO confirmation for the bridge will depend on what the consultation throws up and the outcome of the technical studies ongoing.

MKCC officers are hopeful that this will proceed, to at least DCO application, without too much change for the positioning of the Relief Road junction and this will give the developers the confidence to submit their application but any degree of uncertainty may make them wait to see the outcome of the DCO which as you know we won't have until toward the end of 2027. That could delay things by 9-12 months.

Even assuming the planning processes do fall into place there could be a second reason for delay in construction, and that would be around the overall housing market. There are clear signs of things slowing already and whilst MKCC remain hopeful of current global matters resolving themselves without major long term impacts on interest rates and construction costs, the city council cannot rule out the short term impacts that we are already seeing having an impact on the speed at which the developers want to open up a new large scale site if the appetite of housebuilders to acquire development land diminishes. There is no specification indication of that at this time in the MK market, but it does remain a risk.



Snippets

1. **H10 extension and likely start to build out of Church Farm**

The H10 works are likely to get underway in August/September. MKCC hope to be able to identify the main contractor this month. This is though subject to the world not getting any more turbulent in the next couple of months and an element of stability being restored.

2. Highways data stats collected by EWR or MKCC on impacts of EWR and/or SEMK on local traffic modelling

Although we know the modelling exercises are happening MKCC don't have any results at this stage. Murray Woodburn and a member of his team, David Elliot, are best placed to run you through the various inputs that are being used for the exercise(s) although they have signed a non-disclosure agreement with EWR and EWR state they will only release the data when they submit their DCO application to government.

3. SEMK – any movement?

There is positive movement on the two main applications (which have outline permission subject to conditions) and MKCC may be able to let these go out with the s106 agreements in place by the end of June but work is ongoing.

4. MK2050 – date of likely Planning Inspectors Inquiry

The earliest possible date would be some time in Q4 of this year. I am told the strategic planning team are hopeful but obviously not certain, so November seems possibly.

7. Do you think MKCC can sustain the 'not before 2038' clause to the land east of Newport Road part of the local plan

There are quite a few issues to be resolved before this allocation can move forward so officers at MKCC think it's realistic to say it's not going to be happening until the 2030's. Sustaining 2038 would take a strong and robust planning position and a constant supply of housing coming forward on the other allocated sites. If that starts to wane, then MK City Council could have a problem however the city council seems not to be in any hurry to solve any of the issues over the site given the volume of other matters that need to be attended to.

8. Anything on Universal?

The Council has apparently created a 'working group' under the direction of the Deputy CEO to deal with Universal related matters. I think Murray Woodburn is also involved so the council appears to be mindful of the issues and all the opportunities and challenges that it will bring before the area starts to see any of the benefits.

9. Anything on e-bike and scooters and likely chorale sites in Woburn Sands

Whilst MKCC seems to have an ambition to tackle this problem, and the desire to see proper provision in all communities, there is little information on what plans the city council has for retro fitting and the senior officer dealing has been away from the office recently so I have not been able to catch up with her.

10. Date for the next meeting of the SEMK Stakeholders Group

Officers at MKCC tell me that hopefully something will be put in the diary before the beginning of the main holiday season.

**Route of so-called bypass from Newport Road to Bow Brickhill Road crossing the railway at
Woodley's Farm**



Cllr David Hopkins

Mayor of Woburn Sands 2026/27

David.hopkins@milton-keynes.gov.uk



Unitary Councillors Report – June 2026

Reporting Graffiti to the Council

Each year, the Council's contractor, Suez, removes graffiti from council infrastructure, including buildings, street furniture and underpasses. The council receives an average of 150 enquiries each month about this problem and there are two full time crews who clean or paint areas prone to persistent graffiti. This work forms a key part of maintaining the appearance of the city, but it does come at a high cost. Graffiti removal and prevention cost the council over £300k each year.

The crews clean off graffiti as quickly as possible from council-owned buildings, bridges or street furniture but it can take longer to do if the damage is extensive and requires specialist cleaning methods or it is inaccessible.

For example, graffiti located at height or on or near the highway will require either additional equipment or traffic management to keep staff safe. Due to the high cost of traffic management, the council will often coordinate this work with planned highway maintenance to minimise disruption and expense.

The Council does not remove graffiti from privately owned buildings, nor does it offer a removal service so reports should be directed to the landowner. Property owners and organisations are encouraged to take responsibility for maintaining their assets, helping to keep Milton Keynes an attractive place to live, work and visit.

Graffiti on Council-owned land or property can be reported via the Council's website <https://www.milton-keynes.gov.uk/waste-and-recycling/report-or-request-it/report-litter-fly-tipping-or-graffiti> or by calling 01908 252570.

If the graffiti is on a bus stop, please report it to Passenger Transport on the Contact Us form.

<https://mycouncil.milton-keynes.gov.uk/service/Passenger Transport Contact Us>



SUEZ named new operator of MK Waste Recovery Park

This autumn SUEZ, who already collect our waste and recycling, will take over operating the Milton Keynes Waste Recovery Park from current operators Thalia.

The plant processes the city's household rubbish and turns waste that can't be recycled into sustainable energy. Since it opened in 2018, almost 100% of the city's waste has been diverted from landfill, it can also process up to 132,000 tonnes of unrecyclable waste each year.



Universities Merge

Two major universities are to merge in a move that will build on their collective strengths in engineering, energy and defence.

Cranfield University in Bedfordshire will become part of King's College London from August 2027.

Prof Shitij Kapur, vice-chancellor and president of King's College London, said it was "a deliberate step to bring some of the best of UK to compete with the best in the world".

He added that the merger "would bring new educational possibilities for students, new discoveries from academics and a clear focus on working in partnership with industry and government to support national resilience".

The proposed merger will create a UK university specially equipped for the changing world, building on the existing individual strengths of each institution across:

- Engineering and Technology- aerospace, advanced manufacturing, AI and robotics
- Environment and resources – water, soil, food systems and climate
- Energy – hydrogen, batteries and net zero systems
- Economy, industry and leadership – productivity, skills and innovation
- Society and policy – health and life sciences, regulation and public leadership
- Security and Defence – expertise spanning science, strategy and operations.

The move follows the merger of the universities of Kent and Greenwich in 2025.

As a specialist postgraduate university, Cranfield will benefit from the interdisciplinary breadth and scale of King's.

King's, in turn, will be strengthened by Cranfield's world-renowned expertise in technology, engineering and management, alongside its deep and long-standing partnerships with industry and government.

Prof Dame Karen Holford, chief executive and vice-chancellor at Cranfield University, said the merger would "create a global university" delivering excellence with "purpose, drive and scale".

She added that they would continue their mission to tackle real-world issues with "Cranfield University's outstanding applied research... and long-standing industry links to King's".

Lord Patrick Vallance, science minister, said the merger "creates an extraordinarily powerful university".

"It holds huge potential for the Oxford-Cambridge Growth Corridor"

<https://www.bbc.co.uk/news/articles/cze0gr42xw9o> and gives "King's a place at the heart of one of our most important regions for science and technology", he said.



Universal revealed the name of its new UK park

alongside the first look at the destination's official logo

Universal

Comcast NBCUniversal has committed to invest over £5bn in the entertainment resort complex during the expected 5 years of construction, as well as an additional £1bn in capital investment over the first 10 years of operation

Government will support the project with an investment of £1.3bn on regional and local community infrastructure to ensure the park can operate successfully, with improved transport links for local residents and visitors from across the UK and abroad

Development will create 28,000 jobs between construction and operation across a range of industries, including in Industrial Strategy growth driving sectors like creative, technology, hospitality and construction, and is estimated to generate nearly £50bn of economic benefit for the UK

Future entertainment resort complex will be named 'Universal United Kingdom Resort' as Chancellor visits site where construction will soon begin and meets first UK team members employed on the project

One of the largest ever investments in the UK tourism sector has been agreed between the government and Comcast NBCUniversal to build an entertainment resort complex, the Universal United Kingdom Resort, in Bedfordshire that will employ thousands and entertain millions of people.

Featuring a world-class theme park and resort, the project will be developed by the company's Universal Destinations & Experiences segment and is the brand's first major destination in the UK and Europe.

Comcast NBCUniversal's investment will also bring nearly 20,000 jobs during construction and a further 8,000 jobs when it opens in 2031. With immersive storytelling, thrilling attractions and hospitality, Universal expects the site to generate nearly £50 billion of economic benefit for the economy by 2055.

The government's investment unlocks regional transport and infrastructure improvements that will maximise the benefits of the development and enable wider growth across the region. The theme park and resort is expected to attract millions of visitors each year including more than a million additional overseas visitors.

With enabling works on the site now in progress and construction soon to begin, today marks a significant milestone in Universal advancing this landmark project. Over 100 people in the UK have been employed to work on the project, with Universal receiving expressions of employment interest from over 33,000 individuals. Approximately 80% of employees at the theme park and resort are expected to come from Bedfordshire and the surrounding regions.

To mark this milestone, Chancellor Rachel Reeves and Culture Secretary Lisa Nandy hosted Brian Roberts, Chairman of Comcast Corporation, and Mark Woodbury, Chairman and CEO of Universal Destinations & Experiences, at 11 Downing Street to unveil the name and logo for the theme park and resort.

Additionally, the Chancellor visited the site this morning (Wednesday) where she met with Mr Woodbury and other senior executives from Universal Destinations & Experiences, as well as many of Universal's new hires already based in Bedford.

The government is committed to making the UK the best place in the world for investors. Universal choosing Bedford for its first European park is a testament to the strength of the UK's visitor offering and creative industries, a demonstration that the UK is open for business and the modern Industrial Strategy in action. The package announced today is likely to be one of the most significant investments made in the United Kingdom during this parliament.

Separately, Universal and the government are also cooperating to maximise benefits to local colleges and universities. For example, Universal has committed to world-class training opportunities for the next generation of its workforce, including through a range of apprenticeships and internships. This aligns with the government's ongoing work to unleash the potential of the Oxford-Cambridge Growth Corridor and lay the foundations for Bedford to become an innovation hub.

As part of its total £1.3 billion investment, the government will provide a grant of £400 million through the exceptional Regional Growth Fund and the Department for Culture, Media and Sport will provide a grant of £438 million to invest in new community infrastructure to maximise the benefits of the development and support growth across the region. These grants will only be paid once Universal has completed the community infrastructure (in the case of the DCMS grant) and officially opened the theme park and resort.

The Department for Transport is also going ahead with plans to upgrade the strategic road and rail network, on the A421 and at Wixams station, which will provide wider resilience and improved connectivity within the region, at an expected cost of £474 million.

As one of the key investment commitments in the UK's Modern Industrial Strategy (2025), this project directly supports the government's plan to increase business investment in the creative industries from £17 billion to £31 billion by 2035, contributing to the broader UK growth mission. The UK's Creative Industries are a global engine of innovation and growth - generating £124 billion for our economy and supporting over 2.3 million jobs. As a cornerstone of our modern Industrial Strategy, this sector drives creativity, competitiveness, and opportunity.

Notes

- Please contact Universal Destinations & Experiences for their conceptual artists rendering and logo: uprcorpcomm@uniparks.com.
- More information on the project can be found at universalukproject.co.uk.
- This announcement follows the investment agreement in principle reached between Comcast NBCUniversal and the government in April last year.
- On 15 December, the Ministry of Housing, Communities and Local Government granted planning permission by way of making a Special Development Order for the theme park and resort, and associated development at the former brickworks and adjoining land at Kempston Hardwick, Bedford. This came into force on 12 January 2026.



Universal's planned Bedford development

■ Potential site size: 700 acres (2.8sq km)



Source: Universal Destinations & Experiences

BBC



The park will include a retail and entertainment area accessible without a ticket